

---

# FBT-6

Fieldbus Monitor

User Manual



 **Relcom**  
[www.relcominc.com](http://www.relcominc.com)

---

© Copyright Relcom, Inc. 2011-2018

All rights reserved. No part of this manual may be reproduced, photocopied, stored on a retrieval system or transmitted without the express prior written consent of Relcom, Inc.

Relcom, Inc.  
2221 Yew St.  
Forest Grove, OR 97116  
USA

Tel: (503) 357-5607  
Fax: (503) 357-0491  
[www.relcominc.com](http://www.relcominc.com)

# Table of Contents

---

## I. Table of Contents

I.	Table of Contents .....	3
II.	Introduction.....	5
III.	Certifications.....	6
IV.	FBT-6 Assistant Software Installation Instructions.....	7
	Before Starting .....	7
	FBT-6 Assistant Installation .....	8
	Windows 8 and 10 (32- and 64-bit) Driver Installation.....	14
	Windows 7 (32- and 64-bit); 64-bit Vista Driver Installation...	14
	Windows Vista 32-bit Driver Installation .....	15
	Windows XP Driver Installation.....	17
	Windows 2000 Driver Installation.....	21
	Uninstalling the FBT-6 Assistant.....	25
V.	Operation.....	26
	Segment Check Mode .....	29
	Manual Mode Functions.....	31
	1. Voltage.....	31
	2. Peak Noise .....	32
	3. Average Noise .....	34
	4. Shield Short .....	36
	5. Retransmit .....	37
	6. Add-Drop.....	38
	7. Device.....	39
	8. Low .....	41
	9. Device Count .....	42
	10. Save Report.....	43
	USB Port and Associated Features .....	45
	1. Connecting the Monitor to the PC USB Port and Starting the FBT-6 Assistant .....	46
	2. Transfer Reports function .....	47
	3. Erase Reports function .....	51
	4. Set Report Names function.....	52
	5. Set Alert Limits function.....	54
	6. Update Firmware function.....	56
	Using the Clip-on Probe Cable .....	59
VI.	Operation in Special Cases.....	60
VII.	Accessories .....	63
VIII.	Specifications .....	64
IX.	Service.....	65
X.	Warranty .....	66
XI.	EMC Summary Information .....	67
XII.	Revision History.....	69

# Table of Contents

---

# Introduction

---

## II. Introduction

The FBT-6 Fieldbus Monitor is a Foundation Fieldbus physical segment and signal testing tool. It allows both engineering and service technicians to determine the health of fieldbus segments. The Monitor supports segment troubleshooting without interfering with segment operation.

This manual was current at the time of printing. Go to [www.relcominc.com](http://www.relcominc.com) for an electronic copy of the latest version of this manual. Further information on fieldbus is available in the Fieldbus Wiring Guide, also available on the website.

### Summary of Features

The Monitor includes the following features:

- Tests the segment automatically and gives a OK/BAD indication without operator intervention.
- Measures segment DC voltage.
- Detects short circuits between the segment cable's wires and shield.
- Indicates number of detected retransmissions to devices.
- Measures noise in three bands: Below, at and above fieldbus frequencies.
- Shows when a device is added to or dropped from the segment.
- Supports the transfer of data collected to a PC via a USB port.
- Supports firmware updates via a USB port.
- Displays the number of devices on the segment.
- Indicates the address of the device with the lowest detected signal level.
- Displays device addresses (in decimal and hexadecimal) and signal level.
- Creates printable reports indicating segment condition.
- Usable in hazardous areas.

# Certifications

---

## III. Certifications

### CE

The Monitor meets the European Union requirements for electromagnetic radiation by complying with the EMC Directive 89/336/EEC.

### FCC

The Monitor is a Class A digital device and complies with Part 15 of the FCC Rules. Operation is subject to the following two conditions: (1) this device may not cause harmful interference, and (2) this device must accept any interference received, including interference that may cause undesired operation.

### Hazardous Area/Location Approvals

FM US and Canada:

- Class I Division 2 Groups A,B,C, and D T4

- Class I Zone 2 Group IIC T4

- Class I Division 1 Groups A,B,C, and D T4

- Class I Zone 0 and 1 Ex/AEx ia IIC T4

ATEX and IECEX

- Ex ia IIC T4 Ga

- Ex ic IIC T4 Gc

# FBT-6 Assistant Software Installation Instructions

---

## IV. FBT-6 Assistant Software Installation Instructions

### Before Starting

FBT-6 Assistant software included with the Monitor supports the USB features of the Monitor.

The FBT-6 Assistant software is on the **FBT-6 Software and Documents** CD included with the Monitor shipment. The **FBT-6 User Manual** is also included on the CD and will be installed along with the FBT-6 Assistant software.

It is always best to use the most up to date software. Download the latest software and firmware versions for free at the FBT-6 web page:

<http://www.relcominc.com/fieldbus/fbt-6.htm>

You must be logged in as an administrator to install the software and driver. **Install the FBT-6 Assistant Software before attaching the Monitor to the computer.** The FBT-6 Assistant application should be installed first, followed by the USB driver. See the appropriate page below for driver installation instructions.

Operating System	Driver installation instruction page
Windows 7, 8, 10 (32- and 64-bit)	14
Windows Vista (64-bit)	14
Windows Vista (32-bit)	15
Windows XP	17
Windows 2000	21

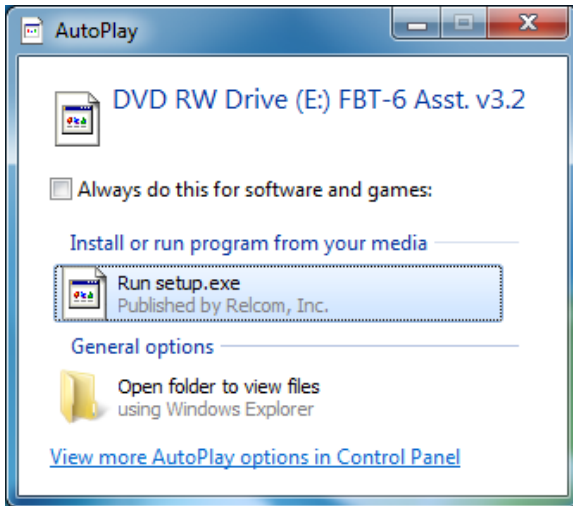
# FBT-6 Assistant Software Installation Instructions

## FBT-6 Assistant Installation

The Monitor should not be attached yet. Close all Windows programs. You must be logged in as an administrator to install the software and driver.

Insert the **FBT-6 Software and Documents** CD and the setup program will run automatically. If it does not run automatically, run the setup.exe file on the CD.

You may see a screen similar to the one shown below:



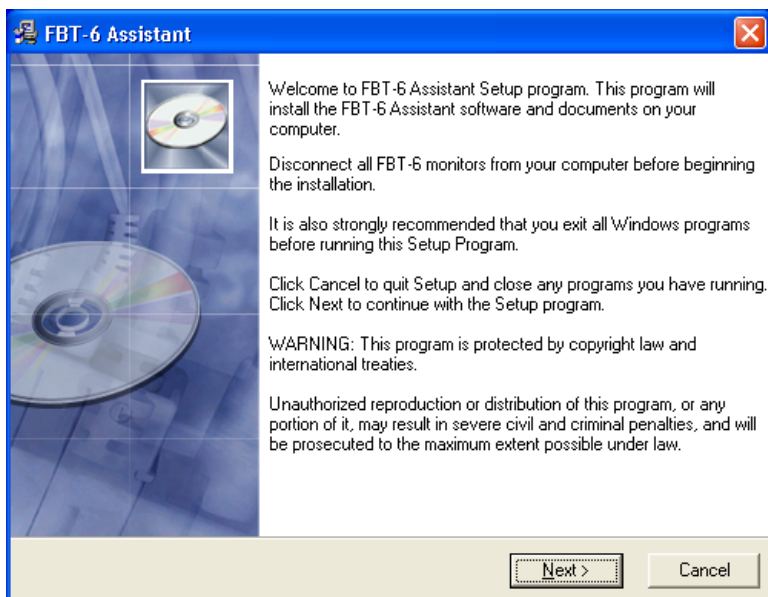
If you do see this screen, click **Run setup.exe**.

You may also see a screen asking if you want to allow the FBT-6 Assistant software to make changes to the computer. Click Yes/Run/Continue as appropriate if you see this screen.



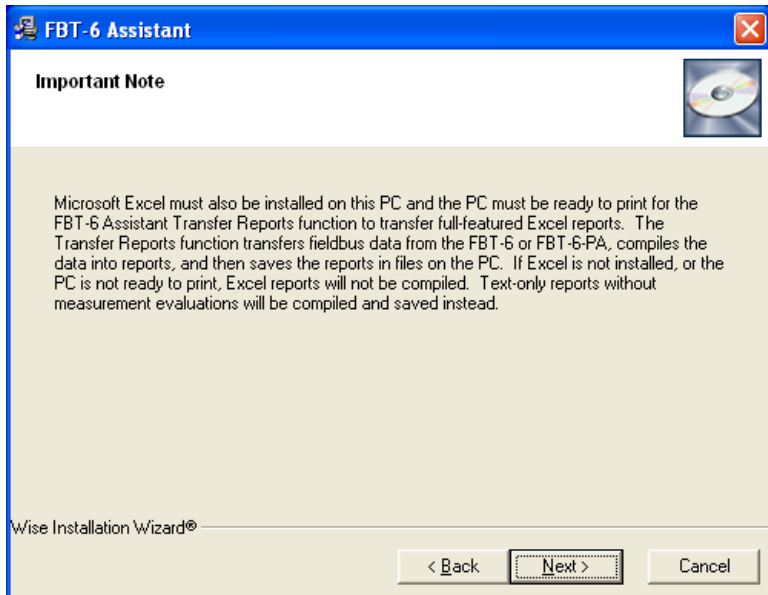
## FBT-6 Assistant Software Installation Instructions

The following screen will be displayed:



Press the **Next** button to continue.

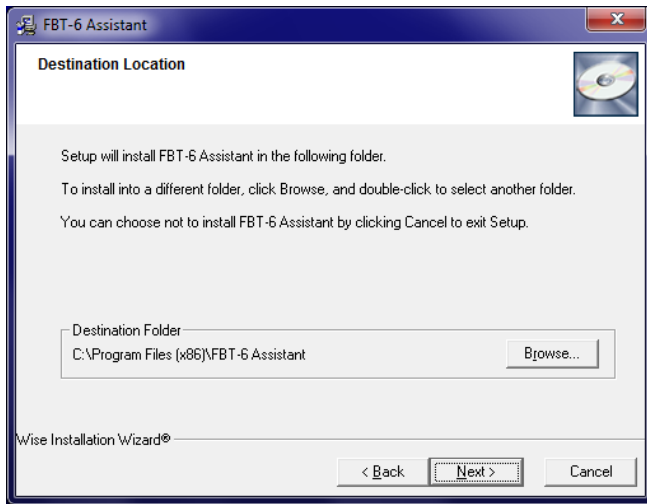
## FBT-6 Assistant Software Installation Instructions



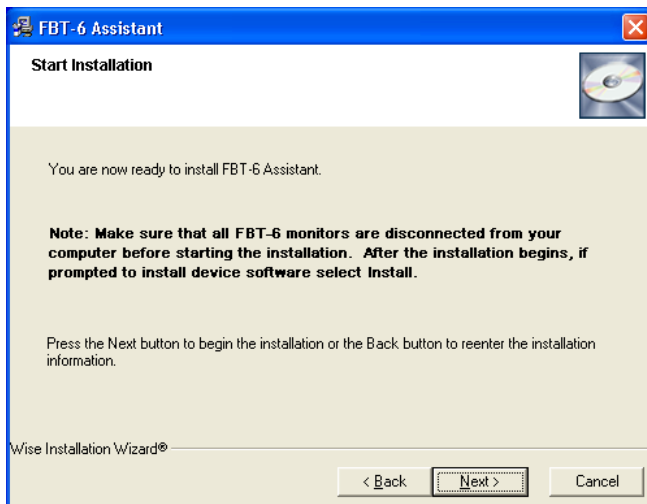
To generate full-featured reports, Microsoft Excel must be installed on the PC and the PC must be ready to print. If not, text reports will be generated instead.

Press the **Next** button to continue.

# FBT-6 Assistant Software Installation Instructions



Choose an installation location or use the default location displayed and press the **Next** button to continue.

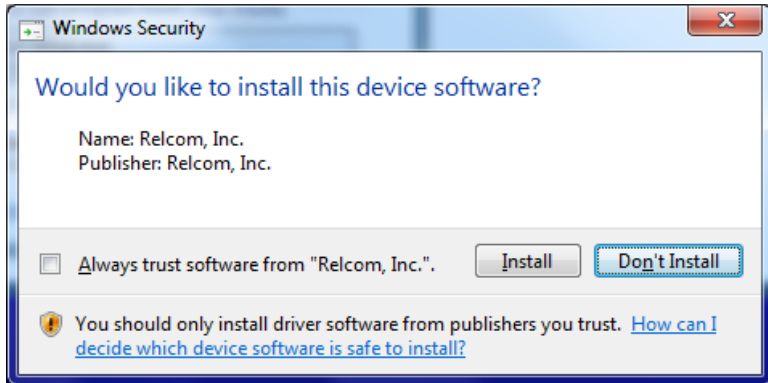


Press the **Next** button to continue.

## FBT-6 Assistant Software Installation Instructions

---

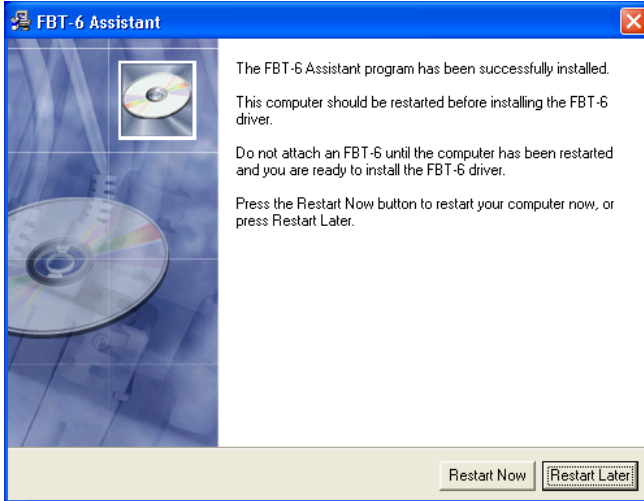
You may see the following screen:



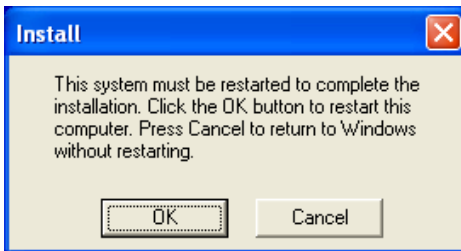
Click **Install**.

# FBT-6 Assistant Software Installation Instructions

Your computer may need to be restarted. If so, you will see the screens below.



Click **Restart Now**.



Click **OK**. Your computer will restart. The FBT-6 Assistant application is now installed. Turn to the driver installation instructions appropriate for your PC as listed below:

Operating System	Driver installation instruction page
Windows 7, 8, 10 (32- and 64-bit)	14
Windows Vista (64-bit)	14
Windows Vista (32-bit)	15
Windows XP	17
Windows 2000	21

## **FBT-6 Assistant Software Installation Instructions**

---

### **Windows 8 and 10 (32- and 64-bit) Driver Installation**

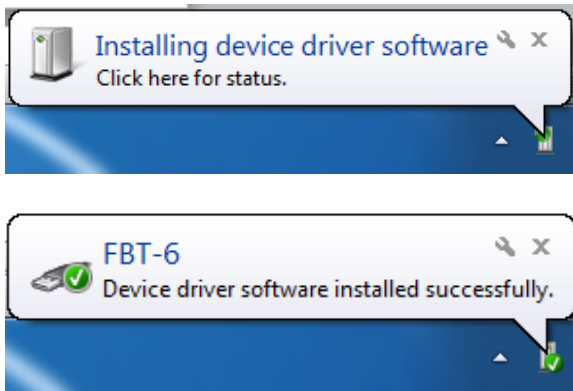
The driver is installed with the FBT-6 Assistant application. No further action is needed.

### **Windows 7 (32- and 64-bit); 64-bit Vista Driver Installation**

After installing the FBT-6 Assistant application, the USB driver needs to be installed. Attach the Monitor to a USB port on the PC with the provided cable.

**Note: Connect the Monitor directly to a USB port on the PC. The Monitor does not work with all USB hubs and laptop docking stations.**

The “Installing device driver software” text bubble appears followed by the “FBT-6 Device driver software installed successfully” text bubble.



The driver installation is now complete and the FBT-6 Assistant program is ready for use.

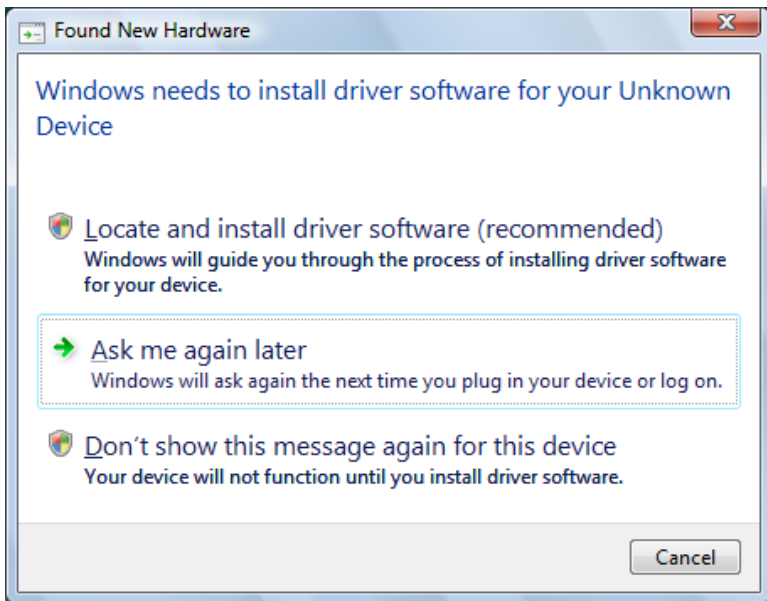
# FBT-6 Assistant Software Installation Instructions

## Windows Vista 32-bit Driver Installation

After installing the FBT-6 Assistant application, the USB driver needs to be installed. Attach the Monitor to a USB port on the PC with the provided cable.

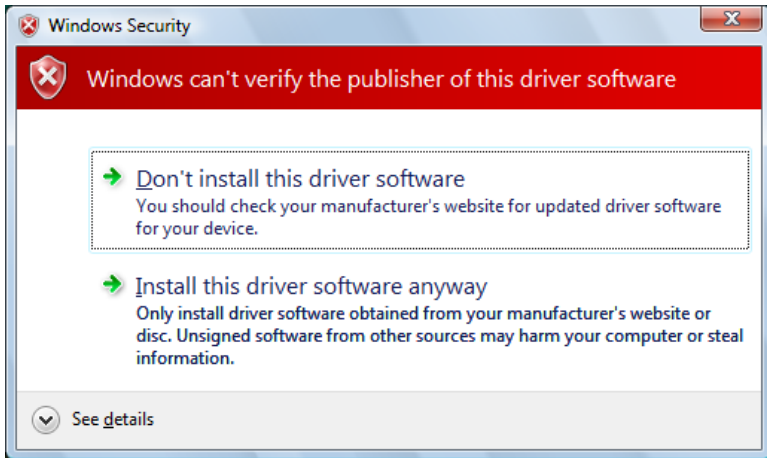
**Note: Connect the Monitor directly to a USB port on the PC. The Monitor does not work with all USB hubs and laptop docking stations.**

The Found New Hardware window appears:

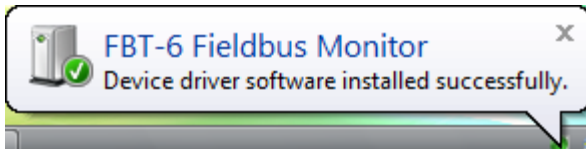


Select **Locate and install driver software (recommended)**.

## FBT-6 Assistant Software Installation Instructions



Click **Install this driver software anyway**.



This text bubble shows that the driver successfully installed.

The Windows Vista driver installation is now complete and the FBT-6 Assistant program is ready for use.



# FBT-6 Assistant Software Installation Instructions

## Windows XP Driver Installation

After installing the FBT-6 Assistant application, the USB driver needs to be installed. Attach the Monitor to a USB port on the PC with the provided cable.

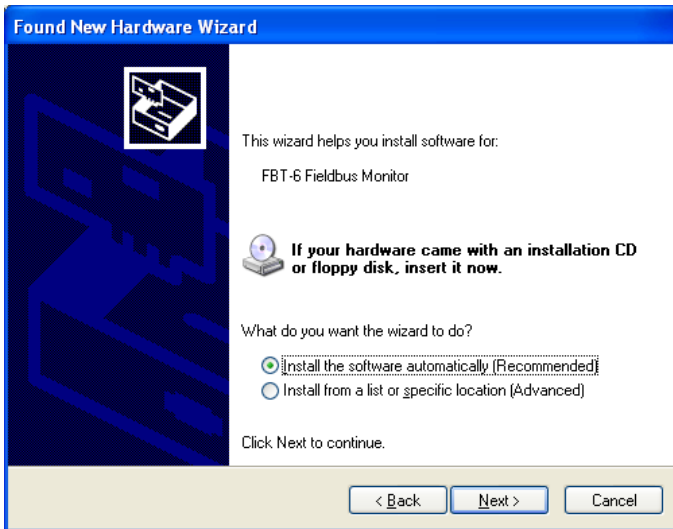
**Note: Connect the Monitor directly to a USB port on the PC. The Monitor does not work with all USB hubs and laptop docking stations.**

The Found New Hardware Wizard window appears:

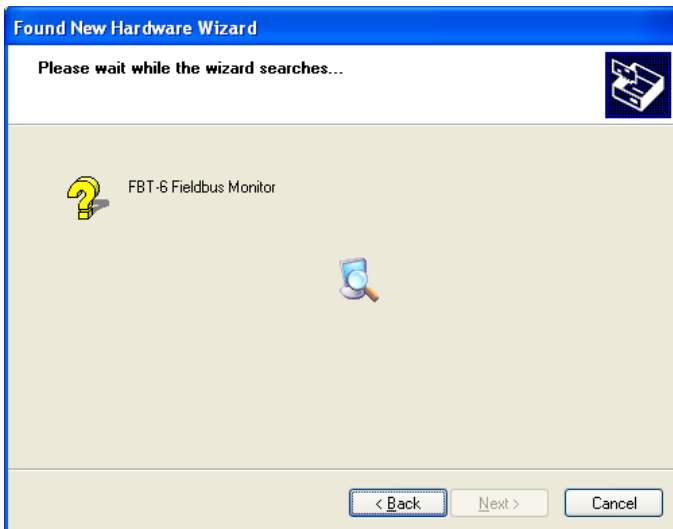


Select **No, not this time** and press the **Next** button to continue.

# FBT-6 Assistant Software Installation Instructions



Select the first option, **Install the software automatically (Recommended)**, and press the **Next** button to continue.



The computer searches for the driver.

## FBT-6 Assistant Software Installation Instructions

### Hardware Installation



The software you are installing for this hardware:

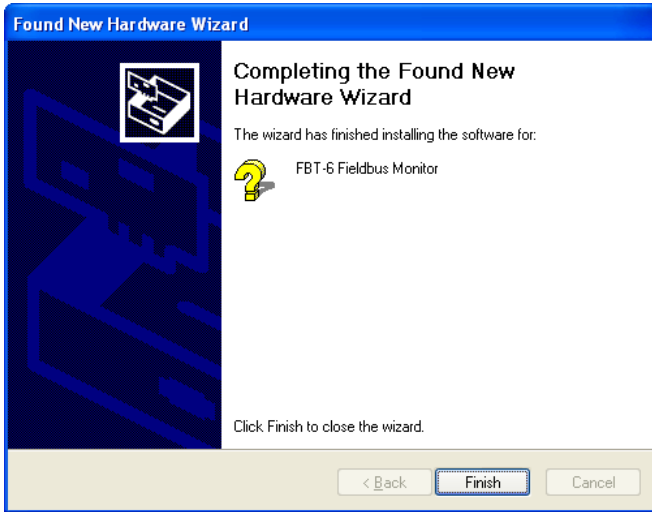
FBT-6 Fieldbus Monitor

has not passed Windows Logo testing to verify its compatibility with Windows XP. ([Tell me why this testing is important.](#))

**Continuing your installation of this software may impair or destabilize the correct operation of your system either immediately or in the future. Microsoft strongly recommends that you stop this installation now and contact the hardware vendor for software that has passed Windows Logo testing.**

Press **Continue Anyway**.

# FBT-6 Assistant Software Installation Instructions



This dialog shows that the driver has been installed. Press the **Finish** button to exit.

The Windows XP driver installation is now complete and the FBT-6 Assistant program is ready for use.

**Important note: The driver must be installed on each USB port that the Monitor will be connected to on the PC. The “Found New Hardware Wizard” will run for each new port that the Monitor is plugged into. Follow these driver installation instructions again for each additional USB port.**

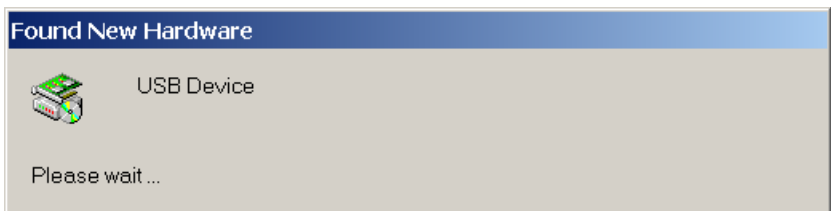
# FBT-6 Assistant Software Installation Instructions

## Windows 2000 Driver Installation

After installing the FBT-6 Assistant application, the USB driver needs to be installed. Attach the Monitor to a USB port on the PC with the provided cable.

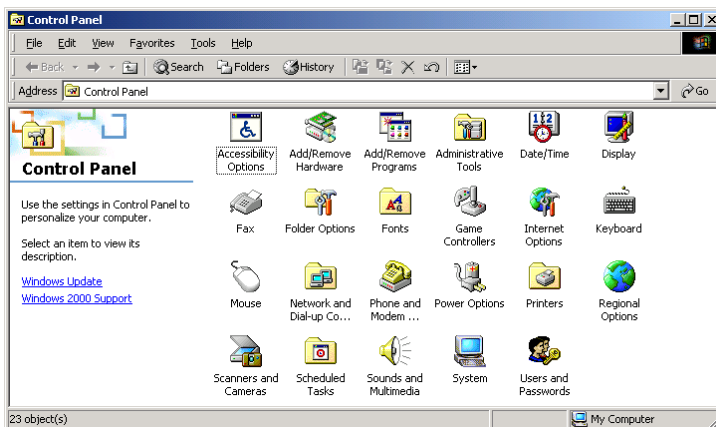
**Note: Connect the Monitor directly to a USB port on the PC. The Monitor does not work with all USB hubs and laptop docking stations.**

The following dialog box appears:



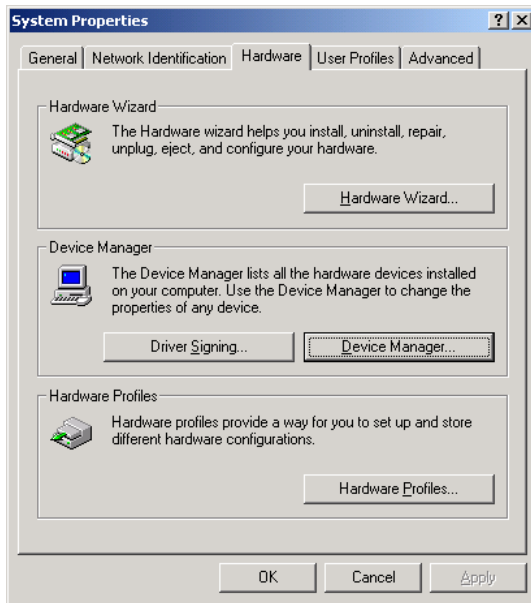
The driver installs automatically after about 30 seconds.

From the Start menu, open the Control Panel by selecting **Start>Settings>Control Panel**.



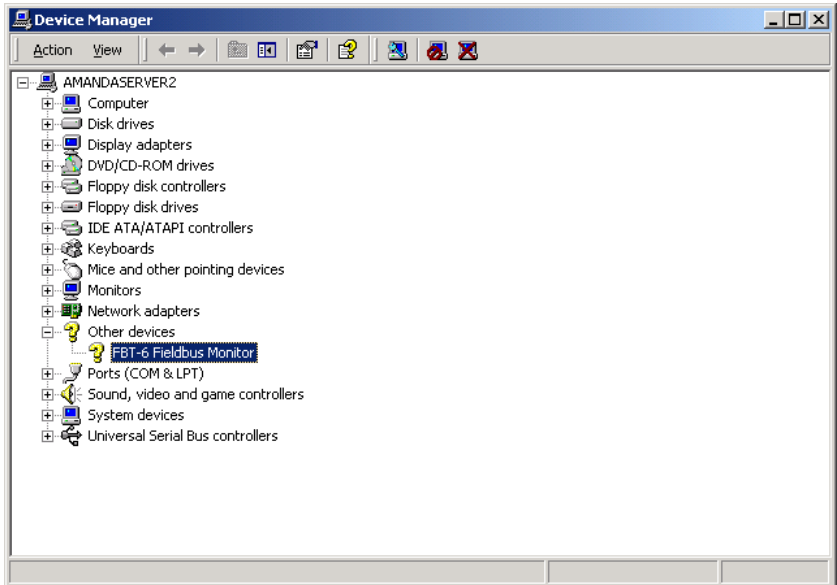
Open **System**.

## FBT-6 Assistant Software Installation Instructions



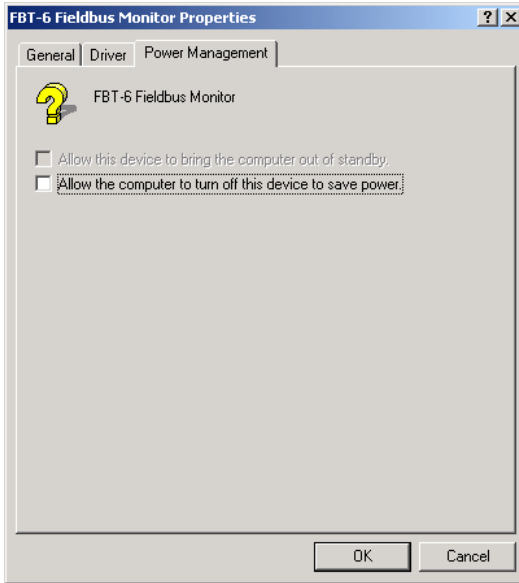
Select the **Hardware** tab. Click the **Device Manager** button.

# FBT-6 Assistant Software Installation Instructions



Look for **Other Devices** and expand this by selecting **+**. Right-click on **FBT-6 Fieldbus Monitor** and click **Properties**.

# FBT-6 Assistant Software Installation Instructions



Select the **Power Management** tab. Uncheck **Allow the computer to turn off this device to save power**. Select **OK**.

Select **OK** on the **System Properties** screen.

Restart the computer.

The Windows 2000 driver installation is now complete and the FBT-6 Assistant program is ready for use.



# **FBT-6 Assistant Software Installation Instructions**

---

## **Uninstalling the FBT-6 Assistant**

Use the Control Panel software uninstall feature appropriate for the version of Windows to uninstall the FBT-6 Assistant (such as Add or Remove Programs, Uninstall a program, Apps & features – Uninstall, etc.)

After the uninstall is complete, restart the computer.

## Operation

---

### V. Operation



**WARNING:** Do not connect the Monitor to a fieldbus and a PC at the same time. This could damage the fieldbus segment and the Monitor.



Use the USB port only in safe (non-hazardous) areas.



Monitor units with serial numbers 0198 and lower have an electrical connection between the conductive case and the fieldbus minus jack (black banana jack). Avoid case contact with grounded conductive objects to prevent a fieldbus minus connection to ground.



The Monitor draws 10mA of current from the fieldbus it is connected to. Verify adequate current is available before connecting the Monitor or bus communications may be impacted.

Install the FBT-6 Assistant software by following the section FBT-6 Assistant Software Installation Instructions on page 7 before attempting to connect the Monitor to the USB port.

Connect the Monitor directly to a USB port on the PC. The Monitor does not work with all USB hubs and laptop docking stations.

The Monitor is powered by the segment it is connected to and turns on automatically. The firmware version in the Monitor is displayed for 4 seconds upon powering up:

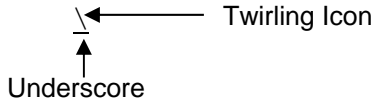
```
RELCOM FBT-6  
FW VER XX.XX
```

## Operation

---

The Monitor begins measuring segment parameters. A bar (icon) twirls on the right side of the display's second line while segment signals are present. If a bad frame is detected since the last display update then an underscore is displayed beneath the twirling icon.

VOLTAGE  
22.5V OK



Two buttons on the front of the Monitor control its operation. The buttons are labeled FUNC (for FUNCTION) and SEL (for SELECT). Press the FUNCTION button to cycle through the available Monitor functions.

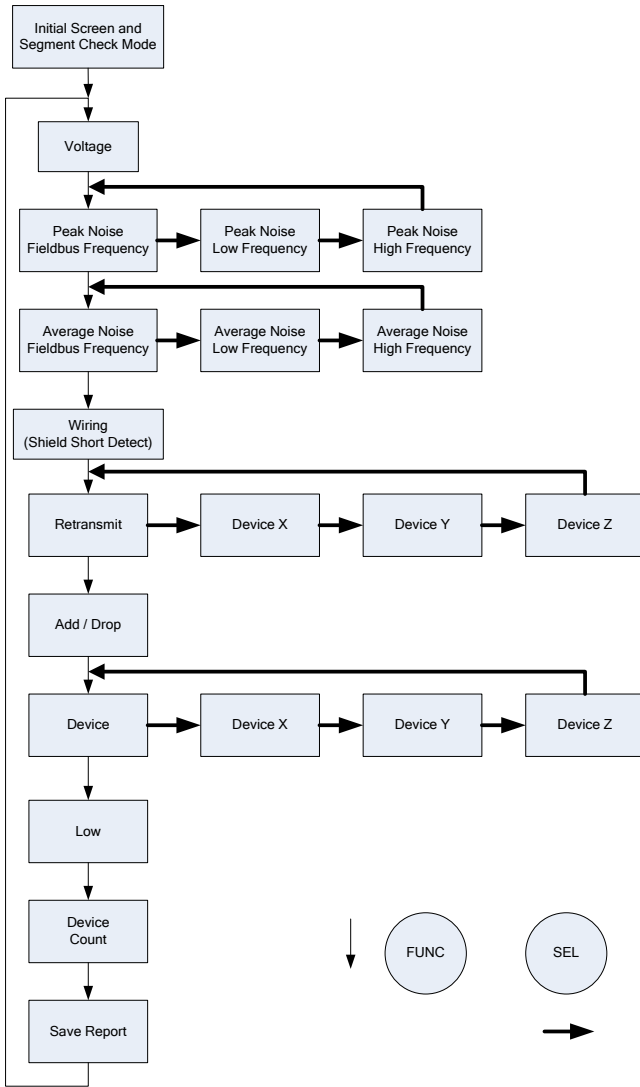
Some functions have multiple sub-screens of data available for display. Sub-screens available for each function are cycled through by pressing the SELECT button. Most functions are reset by holding down the SELECT button for 2 seconds. After holding down the SELECT button for 2 seconds, the data collected for that function is erased giving that function a “fresh start”.

Holding down the SELECT and FUNCTION buttons at the same time for 2 seconds causes the Monitor to reset. The data collected by all Monitor functions is erased (unless saved using the SAVE REPORT feature). The reset is the same as if the Monitor was disconnected then re-connected to the segment.

Short button presses (less than 2 seconds) are acted upon when the button is released, not when depressed.

Figure 1 shows a block diagram of how to navigate through the Monitor functions.

# Operation



**Figure 1: Navigating through the Monitor's Functions**

# Operation

---

## Segment Check Mode

When first attached to a segment, the Monitor enters the automatic Segment Check Mode and shows:

```
SEGMENT CHECK  
IN PROGRESS
```

The Monitor proceeds to automatically collect data and evaluates it to determine the health of the segment. Press either button to exit this mode and enter the Manual Mode at any time.

In Segment Check Mode, the Monitor collects the same data that it collects in Manual Mode. As the data is collected, the Monitor evaluates the data to determine if it is out of specification. When the Monitor has collected enough data to determine that all of the measured parameters are in specification, the display shows:

```
ALL MEASUREMENTS  
OK
```

In this state the Monitor continues taking measurements and displays the OK message.

If at any point in time the Monitor finds a parameter out of specification, it will jump into the Manual Mode and display the screen for the function associated with the first detected out of specification parameter. For example, if a (+) to Shield Short condition is detected, the Monitor enters the Shield Short function in Manual Mode and displays:

```
(+) TO SHIELD  
SHORT
```

The Monitor then operates in Manual Mode as described below from that point on.

If low frequency noise present on the fieldbus is high enough in amplitude and frequency the noise is interpreted by the Monitor as a Fieldbus signal and causes the Monitor to get “stuck” in Segment Check Mode. In this case, troubleshoot and eliminate the source of the noise.

## Operation

---

Parameters are evaluated against limits as OK or BAD. The limits can be set using the Set Alert Limits feature of the FBT-6 Assistant software. See the section **Set Alert Limits function on page 54** for details.

Table 1 lists the parameters checked in Segment Check Mode and the default limit values.

**Table 1: Parameters Checked in Segment Check Mode (Default Limit Values Shown)**

Voltage is $\geq 9\text{VDC}$
Peak noise is $\leq 75\text{mV}$ in the fieldbus band
Peak noise is $\leq 150\text{mV}$ in the low and high frequency bands
Average noise is $\leq 75\text{mV}$ in the fieldbus band
Average noise is $\leq 150\text{mV}$ in the low and high frequency bands
No shield short exists
No retransmits
No device drops or adds
At least one device is detected on the segment
The lowest device signal level is $\geq 150\text{mV}$
The lowest device signal level is $\leq 1200\text{mV}$

# Operation

---

## Manual Mode Functions

Manual Mode is entered when the Monitor detects the first out of specification parameter or either button is pushed. The functions available are described below in the order in which they appear.

### 1. Voltage

The DC voltage of the segment is displayed.

```
VOLTAGE  
22.5V OK
```

If the DC voltage is less than the allowed limit (9V by default), BAD is displayed instead of OK.

```
VOLTAGE  
8.5V BAD
```

The DC voltage limit is configurable using the Set Alert Limits function in the FBT-6 Assistant software. See **Set Alert Limits function on page 54** for details.

# Operation

---

## 2. Peak Noise

Peak noise is measured in three bands: frequencies in the Fieldbus signaling band (Fieldbus Frequency, FF), frequencies below Fieldbus signaling band (Low Frequency, LF), and frequencies above Fieldbus signaling band (High Frequency, HF). The value displayed is the highest noise level measured since the last reset. The particular frequency band displayed is selected by pushing the SELECT button. The FF band is shown first followed by the LF then HF bands.

```
PK FF NOISE
  64 mV OK
```

If the FF band noise level is above the allowed limit (75mV by default), the display will say BAD where it normally says OK.

```
PK FF NOISE
  99 mV BAD
```

If the LF or HF band noise level is above the allowed limit (150mV by default), the display will say BAD where it normally says OK.

```
PK LF NOISE
 199 mV BAD
```

The FF, LF, and HF noise level limits are configurable using the Set Alert Limits function in the FBT-6 Assistant software. See **Set Alert Limits function on page 54** for details.

Holding down the SELECT button for 2 seconds resets the selected peak noise value.



## Operation

---

The approximate frequency bands monitored are listed below.

Low Frequency Band	50Hz to 4KHz
Fieldbus Frequency Band	9KHz to 40KHz
High Frequency Band	90KHz to 350KHz

## Operation

---

### 3. Average Noise

Average noise is measured in three bands: frequencies in the Fieldbus signaling band (Fieldbus Frequency, FF), frequencies below Fieldbus signaling band (Low Frequency, LF), and frequencies above Fieldbus signaling band (High Frequency, HF). The value displayed is the average of the last 100 noise measurements. The particular frequency band displayed is selected by pushing the SELECT button. The FF band is shown first followed by the LF then HF bands.

```
AVG FF NOISE  
68mV OK
```

If the FF band noise level is above the allowed limit (75mV by default), the display will say BAD where it normally says OK.

```
AVG FF NOISE  
1000mV BAD
```

If the LF or HF band noise level is above the allowed limit (150mV by default), the display will say BAD where it normally says OK.

```
AVG HF NOISE  
200mV BAD
```

The FF, LF, and HF noise level limits are configurable using the Set Alert Limits function in the FBT-6 Assistant software. See **Set Alert Limits function on page 54** for details.

Holding down the SELECT button for 2 seconds resets the selected average noise value.

## Operation

---

The approximate frequency bands monitored are listed below.

Low Frequency Band	50Hz to 4KHz
Fieldbus Frequency Band	9KHz to 40KHz
High Frequency Band	90KHz to 350KHz

# Operation

---

## 4. Shield Short

If the segment wiring is good, the Monitor shows

WIRING OK

If one of the wires is shorted to the cable shield, the Monitor indicates a (+) or (-) to shield short as applicable.

(+) TO SHIELD  
SHORT BAD

The Monitor will always detect shorts of 4 Kohms or less. The amount of resistance the Monitor reports as a short varies with temperature and DC bus voltage and could be as high as 36 Kohms.

Shorts come and go in some cases, such as with the presence of moisture or vibration. If the Monitor detected a short in the past then the short went away it indicates the short is intermittent.

(+) TO SHIELD  
INTERMITTENT

Holding the SELECT button down for 2 seconds resets the Shield Short function. Resetting the Shield Short function clears intermittent short indications.

# Operation

---

## 5. Retransmit

If a device does not respond to a Pass Token message from the LAS or if the LAS does not hear the device's response to the Pass Token message, the LAS will query the device again. The Monitor displays the address of the device most recently requiring a retransmission.

```
RETRANSMIT  
NONE OK
```

Or

```
RETRANSMITS=3  
DEVICE 19 (13H)
```

Press the SELECT button to cycle through a display for each device. The number of retransmissions (up to 250) detected since the Monitor was connected is displayed. If more than 250 retransmissions are detected for a device, 250+ is displayed.

```
RETRANSMITS=250+  
DEVICE 19 (13H)
```

Holding down the SELECT button for 2 seconds resets the number of retransmits for all devices to 0. Resetting the Retransmit function also resets the Add-Drop, Device, and Device Count functions.

## Operation

---

### 6. Add-Drop

If a new device is added to the segment, the Monitor will display its address and signal level. A new device is detected by its receipt of a Pass Token frame. If a device does not respond to a Pass Token frame the device is considered dropped by the Monitor and it will display the address and last known signal level of the dropped device.

```
ADD or DROP  
NONE
```

If a device drops from the segment the Monitor shows

```
DROP 17 (11H)  
690mV
```

If a device is added to the segment, the Monitor shows

```
ADD 19 (13H)  
700mV
```

The Monitor is more sensitive to device add and drop activity than control systems. The Monitor may momentarily indicate a device dropped from the fieldbus then quickly added back on while the Live List provided by the control system is unchanged.

Holding down the SELECT button for 2 seconds resets the Add-Drop function. Resetting the Add-Drop function also resets the Retransmit, Device, and Device Count functions.

# Operation

---

## 7. Device

For each device, the address (decimal and hexadecimal) and signal level of each device is displayed in turn by pushing the SELECT button. If the signal level is at or above the minimum limit OK is displayed. The first device shown is the Link Active Scheduler (LAS). "LAS" is displayed after the signal level to indicate that the device shown is the LAS.

```
DEVICE 16 (10H)
1000mV LAS OK
```

If the device was added after connecting the Monitor, a + symbol displays after the signal level. If the device was removed after connecting the Monitor, a – symbol is displayed after the last known signal level.

```
DEVICE 41 (29H)
1000mV + OK
```

The Monitor is more sensitive to device add and drop activity than control systems. The Monitor may momentarily indicate a device dropped from the fieldbus then quickly added back on while the Live List provided by the control system is unchanged.

If the displayed device is dropped, has a signal level less than the allowed limit (150mV by default) or has a signal level more than the allowed limit (1200mV by default) the display will say BAD where it normally says OK.

```
DEVICE 41 (29H)
140mV BAD
```

The minimum allowed signal level limit is configurable using the Set Alert Limits function in the FBT-6 Assistant software. See **Set Alert Limits function on page 54** for details.

## Operation

---

Holding down the SELECT button for 2 seconds will clear the “added” status of any devices added after connecting the Monitor (or since the last reset). Holding down the SELECT button for 2 seconds also deletes dropped devices from the Monitor’s internal device list. Resetting the Device function also resets the Retransmit, Add-Drop, and Device Count functions.



## Operation

---

### 8. Low

The Monitor displays the lowest (weakest) detected device signal level since the Monitor was connected and the address (decimal and hex) of the associated device. If the lowest signal level is at or above the minimum limit OK is displayed.

```
LOW= 580mV OK  
ADDR= 41 (29H)
```

If the lowest signal level is less than the allowed limit (150mV by default) or the lowest signal level is greater than the allowed limit (1200mV by default) the display will say BAD where OK is normally displayed.

```
LOW= 149mV BAD  
ADDR= 41 (29H)
```

The minimum and maximum allowed signal level limits are configurable using the Set Alert Limits function in the FBT-6 Assistant software. See **Set Alert Limits function on page 54** for details.

Holding down the SELECT button for 2 seconds resets the low signal level value.

# Operation

---

## 9. Device Count

The Monitor displays the number of active devices on the segment, including the Link Active Scheduler (LAS). It also displays the number of devices present when the Monitor was first attached as the Initial Count.

```
DEVICE COUNT 12  
INITIAL CNT 12
```

If a device does not respond to a Pass Token message from the LAS the Monitor considers the device to be dropped (no longer active). The device count is reduced by one. If a new device is added, the device count is increased by one.

```
DEVICE COUNT 11  
INITIAL CNT 12
```

The Monitor is more sensitive to device add and drop activity than control systems. The Monitor may momentarily indicate a device dropped from the fieldbus then quickly added back on while the Live List provided by the control system is unchanged.

To make it easier to detect the adding or dropping of a device, the device count and initial count can be reset by holding down the SELECT button for 2 seconds. Resetting the Device Count function also resets the Retransmit, Add-Drop, and Device functions.

# Operation

---

## 10. Save Report

The Monitor can save the data it collected as a report in one of eight numbered report locations (internal memory blocks).

The display repeatedly cycles through three screens with each screen displayed for about three seconds.

The first screen indicates the currently selected report name, report location number and the status of the report location: used or empty. The second and third screens describe how the SELECT button is used to save a report.

```
Report 1  
LOCATION 1 EMPTY  
  
HOLD DOWN SEL TO  
SAVE REPORT  
  
PUSH SEL TO PICK  
NEXT LOCATION
```

The first screen displays LOCATION # EMPTY (# is the location number, 1 to 8) if no report is saved in the selected report location. The screen displays LOCATION # USED if a report is already saved in the selected report location.

To save a report, first choose one of the eight report locations to store the report in. The Monitor starts at the first empty location. Momentarily pressing the SELECT button advances to the next report location. In the example below, Report 8 is the name of the report stored in location 8.

```
Report 8  
LOCATION 8 USED
```

When the last report location, location 8, is displayed and the SELECT button is pressed, the display rolls back to the first report location, location 1.

## Operation

---

To save a report in the selected report location, hold down the SELECT button for 2 seconds. The display shows, SAVING REPORT, while the report is saving .

```
Report 5  
SAVING REPORT
```

When the report is saved, the display shows REPORT SAVED.

```
Report 5  
REPORT SAVED
```

The next time this report location screen is displayed, the report status will indicate USED.

```
Report 5  
LOCATION 5 USED
```

When a USED report location is chosen and the SELECT button is held down for 2 seconds the report is overwritten with a new report.

Use the Set Report Names feature in the FBT-6 Assistant to change the report names. See the section **Set Report Names function on page 52** for details.

## Operation

---

### **USB Port and Associated Features**

The USB port on the Monitor can be connected to a PC. Using the FBT-6 Assistant program installed on a PC, reports collected on the Monitor can be transferred to an Excel file on the PC and the firmware in the Monitor can be updated.

**Install the FBT-6 Assistant software by following the instructions FBT-6 Assistant Software Installation Instructions on page 7 before attempting to connect the Monitor to the USB port.**

**Connect the Monitor directly to a USB port on the PC. The Monitor does not work with all USB hubs and laptop docking stations.**

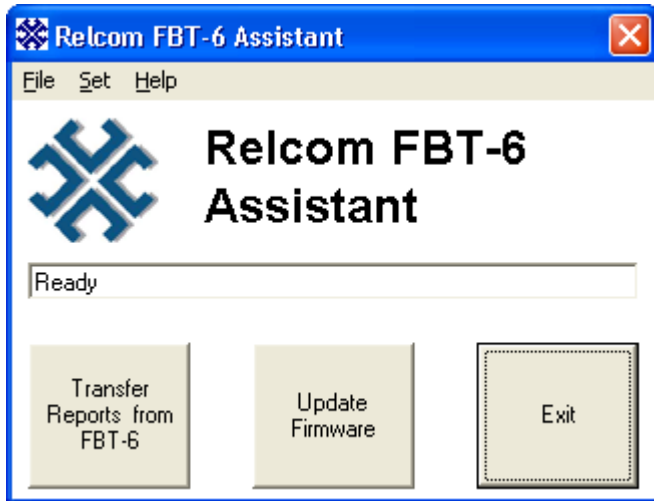
**WARNING: Do not connect the Monitor to a fieldbus and a PC at the same time. This could damage the fieldbus segment and the Monitor. Only use the USB port in safe (non-hazardous) locations.**

## Operation

---

### 1. Connecting the Monitor to the PC USB Port and Starting the FBT-6 Assistant

Connect the Monitor to the USB port using the supplied USB cable. Connect only one Monitor at a time. Open the FBT-6 Assistant program by double clicking on the FBT-6 Assistant desktop icon or selecting Start – All Programs – FBT-6 Assistant – FBT-6 Assistant. Pushbuttons to perform USB related functions are displayed on the screen below.



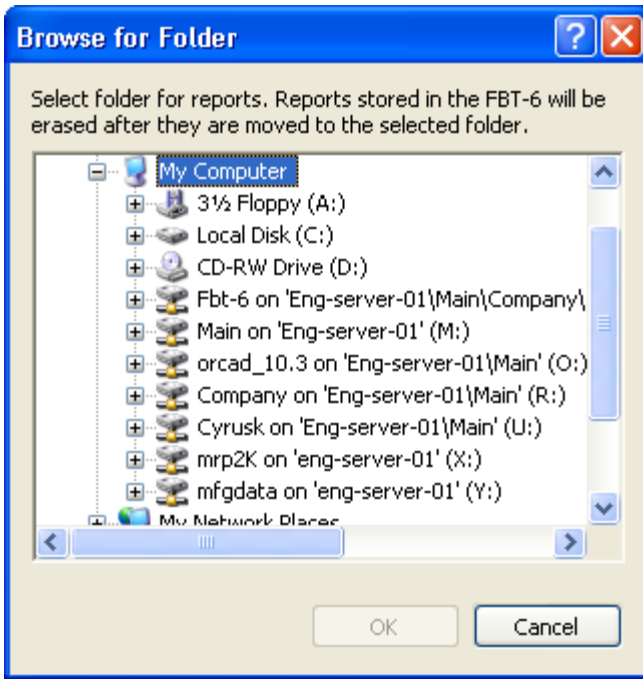
# Operation

## 2. Transfer Reports function

Click the **Transfer Reports from FBT-6** button to transfer the reports saved in all eight Monitor report locations to a PC via the USB port.

**NOTE: Excel must be installed and the PC must be ready to print to generate full-featured Excel spreadsheet reports. Otherwise, text file reports will be generated.**

The FBT-6 Assistant displays a screen like the one below allowing selection of the folder to save the reports in.



## Operation

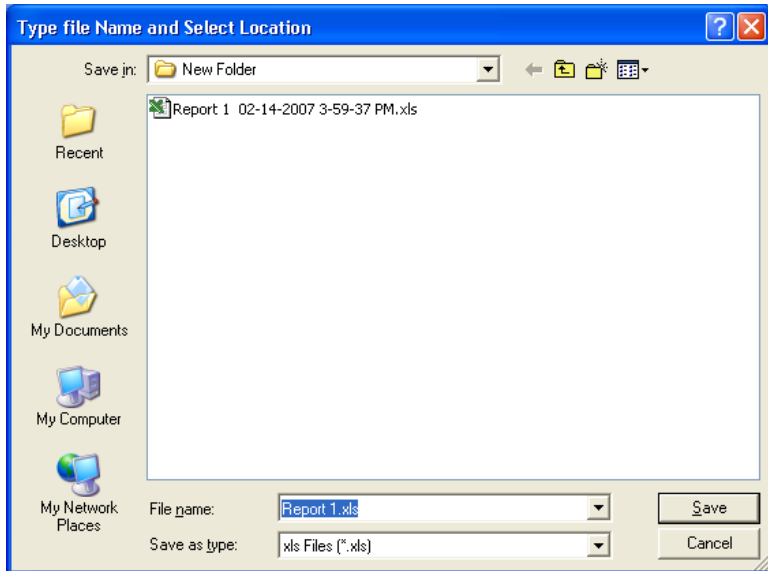
Browse to the folder to save the reports in and click the **OK** button. File names for each report are automatically generated in the following format:

<Report name> <Date report saved in Monitor (MM-DD-YYYY)>  
<Time report saved in Monitor (HH-MM-SS AM or PM)>.xls

For example

Report 1 02-14-2007 3-59-37 PM.xls

If time information is not available on the fieldbus, date/time stamps are not included in the Monitor reports and file names must be specified for each report transferred from the Monitor. In this case, the FBT-6 Assistant prompts for a file name as shown below.



The suggested file name is in the format <Report location name>.xls. For example:

Report 1.xls

Specify the desired file name, and click the **Save** button. This process is repeated for each report transferred from the Monitor (up to 8 times). The FBT-6 Assistant will only present a prompt

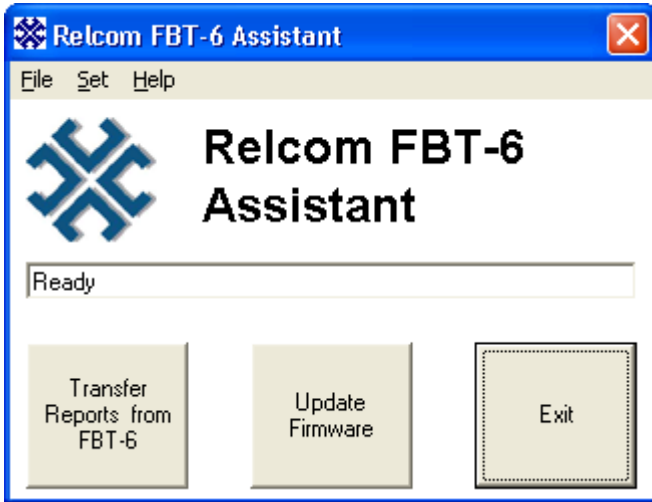


## Operation

---

to save reports that contain saved fieldbus data. Click the **Cancel** button to avoid saving unneeded reports.

When all files have been saved, the main menu is displayed.



The reports are saved in a formatted Excel spreadsheet file. The contents of the file and how it will look when opened in Excel are shown in Table 2.



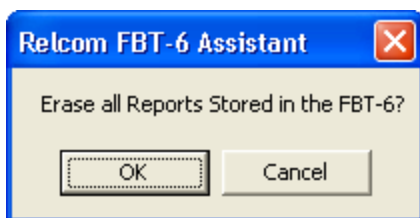
## Operation

---

### 3. Erase Reports function

After all reports are successfully transferred to a PC, the Monitor will erase the reports in its memory the next time it is connected to a fieldbus. This allows transfer of reports to multiple PCs or to more than one location on a single PC and conveniently prepares the Monitor for a “fresh” start the next time it is taken into the field.

The reports in a Monitor may also be erased without first downloading them. From the **File** pull-down menu in the upper left corner of the main screen click **Erase Reports in FBT-6**. A window appears asking for confirmation to erase all of the reports stored in the Monitor.



Click **OK** to erase all of the reports in the Monitor. The reports will be erased the next time the Monitor is connected to a fieldbus.

## Operation

### 4. Set Report Names function

The Monitor can save the data it collects as a report in one of eight report locations (memory blocks) using the SAVE REPORT function (see page 43). Each report has a name that can be changed. The report names are changed using the Set Report Names function in the FBT-6 Assistant.

Report names automatically generate file names and titles for reports transferred to a PC using the Transfer Reports feature (see page 47). Report names help to keep track of where the reports were collected (which segment, location on a segment, etc.).

To display and edit report names in the Monitor click the **Set** pull-down menu and select **Report Names**. The Display/Edit Report Names window appears showing the current report names.

The FBT-6 has eight locations available to store reports. Report names should be from 1 to 15 characters that can be letters or numbers, etc., but should not be \/:\*?\">].

Report Name	
Location 1	Report 1
Location 2	Report 2
Location 3	Report 3
Location 4	Report 4
Location 5	Report 5
Location 6	Report 6
Location 7	Report 7
Location 8	Report 8

Buttons: Show Default Names, Read Current Names from FBT-6, Save Report Names to FBT-6, Cancel

Type in the desired report names and click **Save Report Names to FBT-6**. This writes the report names to the Monitor. The report names must be 1-15 characters long and cannot contain the following characters: \/:\*? < > |

## Operation

---

Click **Show Default Names** to show the default report names. To save the default names in the Monitor, Click **Save Report Names to FBT-6**.

Click **Read Current Report Names from FBT-6** to display the report names stored in the Monitor.

Click **Cancel** to leave the Display/Edit Report Names window without changing the report names stored in the Monitor.

## Operation

### 5. Set Alert Limits function

The Monitor evaluates some of the parameters it monitors as OK or BAD based upon user configurable alert limits. To display and edit these limits click the **Set** pull-down menu and select **Alert Limits**.

Measurement	Alert Limits
Voltage	<input type="text" value="9.0"/> V Minimum
Signal Level	<input type="text" value="150"/> mV Minimum
Signal Level	<input type="text" value="1200"/> mV Maximum
Avg Fieldbus Frequency Noise	<input type="text" value="75"/> mV Maximum
Peak Fieldbus Frequency Noise	<input type="text" value="75"/> mV Maximum
Avg Low Frequency Noise	<input type="text" value="150"/> mV Maximum
Peak Low Frequency Noise	<input type="text" value="150"/> mV Maximum
Avg High Frequency Noise	<input type="text" value="150"/> mV Maximum
Peak High Frequency Noise	<input type="text" value="150"/> mV Maximum
Shield Short	<input type="text" value="No Shorts"/>
Device Add or Drop	<input type="text" value="None Added/Dropped"/>
Device Retransmits	<input type="text" value="0"/> Maximum

Type in the desired limits for each parameter and click **Save Limits to FBT-6** to write the limits to the Monitor.

## Operation

---

Click **Show Default Limits** to show the factory default limit values. To save the default limits in the Monitor, Click **Save Limits to FBT-6**. The default limits are based upon the Foundation Fieldbus physical layer standard (IEC 61158) where possible.

Click **Read Limits from FBT-6** to display the limit values stored in the Monitor.

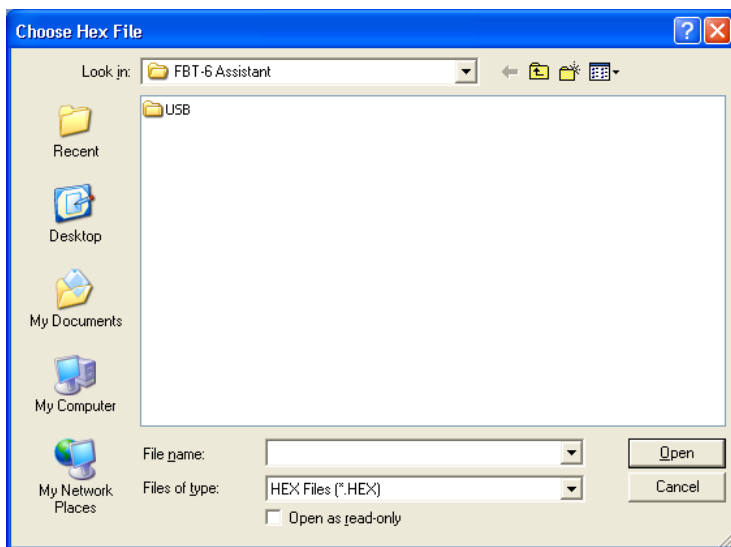
Click **Cancel** to leave the Set Alert Limits window without changing the limits stored in the Monitor.

## Operation

### 6. Update Firmware function

New features for the Monitor may be released occasionally. These features may be added to Monitor units already in the field by updating the Monitor firmware. The Update Firmware function allows the existing firmware in the Monitor to be replaced with new firmware.

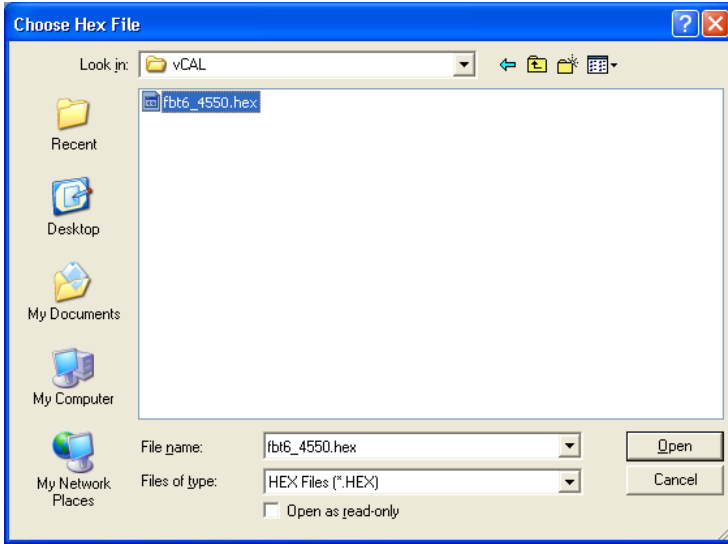
Download the Monitor firmware file from [www.relcominc.com](http://www.relcominc.com) and save it on the PC. Start the FBT-6 Assistant and click the **Update Firmware** button to begin the update process. The Choose Hex File window opens.



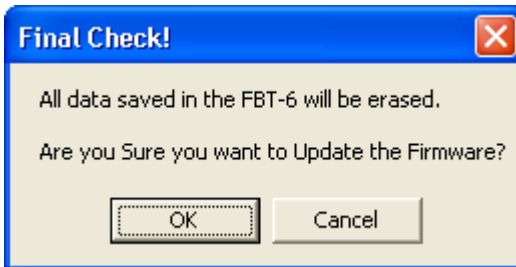


## Operation

Specify the new firmware file by browsing to the folder containing the firmware file, selecting the file, then clicking the **Open** button.



The Final Check! Window opens as shown below.



Updating the firmware erases any reports saved in the Monitor. Click **OK** to proceed with the update. Click **Cancel** to stop the update and return to the main FBT-6 Assistant screen.

## Operation

---

After clicking **OK**, the following screen appears.



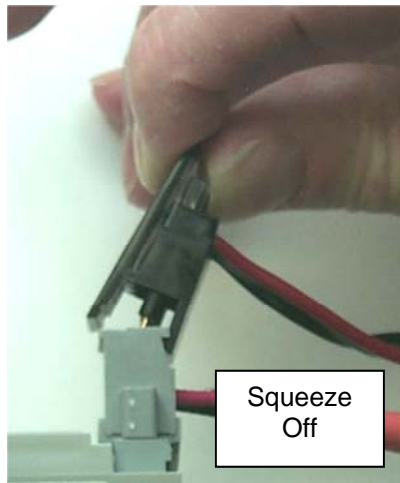
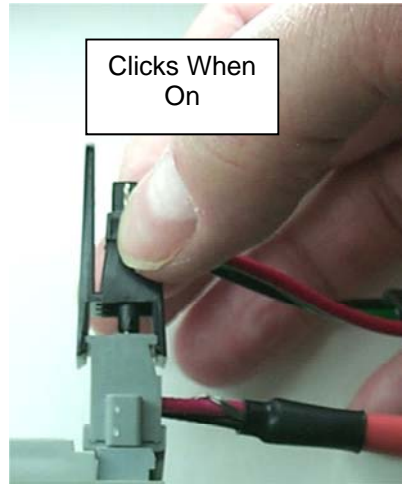
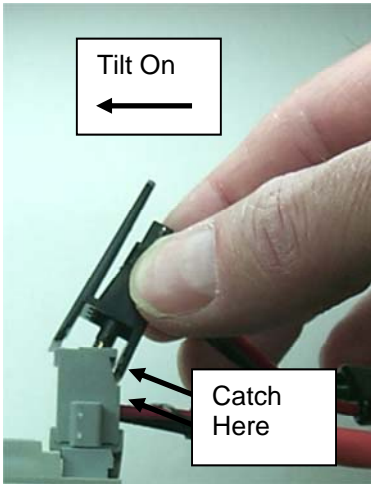
Once the firmware update is complete, the FBT-6 Assistant status line in the middle of the FBT-6 Assistant main menu will change from, "Firmware update will take a few moments. Please wait..." to "FBT-6 firmware loaded. Ready...". Close the FBT-6 Assistant program by clicking the **Exit** button and begin using the Monitor.

# Operation

---

## Using the Clip-on Probe Cable

Each Monitor ships with two cables to attach the Monitor to a fieldbus. One cable has standard mini-hook connectors for attaching to the fieldbus. The second cable has a clip-on probe for easy attachment to Phoenix Contact style screw terminal connectors such as those on the Relcom Megablock wiring blocks. The pictures below show the best methods for attaching and removing the clip-on probe.



## Operation in Special Cases

---

### VI. Operation in Special Cases

The Monitor operates differently under certain special circumstances. This section describes the behavior of the Monitor in these special cases.

#### Limitations

The Monitor will collect data on a total of up to 32 devices on a segment including the LAS (each device has a separate address). This total of 32 devices includes devices that had been on the segment, but are now removed. If the total number of devices exceeds 32, the data for one of the removed (dropped) devices will be deleted to make room for the newly detected device. If 32 active devices are present on the segment and a 33<sup>rd</sup> device is added, the 33<sup>rd</sup> device will be ignored.

#### Silent Segment Behavior

The fieldbus segment that the Monitor is connected to may contain no frame traffic for long periods of time. This Silent Segment condition may be present when the Monitor is initially connected to the segment or may occur after the segment has been transmitting frames for some period of time. The Monitor will continue to record and display data, even when the segment is silent.

When the segment is in a silent condition the Monitor will collect a set of non-device related data (DC Volts, Noise, etc.). In addition, if the segment remains silent for about 2 seconds, the Monitor will mark all devices as dropped and set the (active) device count to 0.

# Operation in Special Cases

---

## Excess Noise Mode

High levels of noise on the fieldbus can make fieldbus signals undetectable. In addition, the noise may be interpreted as constantly transmitted corrupted fieldbus data. In this case, the Monitor becomes unresponsive because it is spending so much time trying to identify good fieldbus frames. When this situation occurs, the Monitor recognizes that it is spending too much time trying to identify good fieldbus frames and will enter Excess Noise Mode. Upon entering Excess Noise Mode, the Monitor quits looking for fieldbus transmissions and the following display appears:

```
EXCESS NOISE, NO  
FIELDBUS MEAS. *
```

Pressing either the FUNCTION or SELECT button returns to the Voltage screen and the screens can be navigated normally. However, only fieldbus physical layer information (voltage, noise, and shield shorts) is displayed. Information contained in fieldbus data (device addresses, signal level, number of devices, etc.) is not available and the data portion of the screens normally displaying fieldbus data is blank. The twirling icon is also replaced by “\*”.

To exit the Excess Noise Mode, remove the source of the noise from the bus then reset the Monitor by holding down both buttons for 2 seconds or disconnecting and reconnecting the Monitor. If the high noise level is still present, the Monitor will again enter Excess Noise Mode.

Note that in Excess Noise Mode, the Monitor cannot differentiate between fieldbus signals and noise. As a result, the Monitor measures noise plus signal when it displays noise values. The noise level measurements displayed will be very high.

## Operation in Special Cases





---

### Unavailable Data

The data for some or all displays will be unavailable during Initial Discovery, Excess Noise Mode, after a function is reset, or because the segment is silent. When the Monitor is collecting and processing segment data, information may not be ready for display. In this case, only the selected Monitor function name is displayed. The FUNCTION and SELECT buttons still navigate through the menus as they normally would.

## Accessories

### VII. Accessories

Part Number	Description	Picture
FBT-A61	FBT-6 Fieldbus Cable with Mini-Hook Probes	 A black fieldbus cable with a Mini-Hook probe at one end and a connector with three colored wires (red, green, black) at the other.
FBT-A62	FBT-6 USB Cable	 A black USB cable with a USB-A connector on one end and a fieldbus connector on the other.
FBT-A63	FBT-6 Fieldbus Cable with Clip-on Probe	 A black fieldbus cable with a clip-on probe at one end and a connector with three colored wires (red, green, black) at the other.
FBT-A64	Clip-on Probe	 A black clip-on probe with a rectangular base and a vertical probe tip.

Contact your local MTL representative for pricing and availability.

<http://www.mtl-inst.com/>  
(or in the U.S. call 1-713-595-6100)

# Specifications

---

## VIII. Specifications

Input Voltage:	Fieldbus Mode: 8 to 32 VDC USB Mode: 4.1 to 5.5 VDC
Max. Input Current:	Fieldbus Mode: 10 mA USB Mode: 30 mA
Power Dissipation:	Fieldbus Mode: 320 mW max (@ 32 VDC) USB Mode: 165 mW max (@ 5.5 VDC)
Operating Temperature:	-20 to +50°C *
Dimensions:	146 x 88 x 28 mm (5.7 x 3.5 x 1.1in.)
Weight:	378g (0.83lb.)
Case material:	ABS
DC Voltage Measurement Range:	8 to 32 VDC +/- 0.5 VDC
LF Noise Measurement Range:	50Hz to 4KHz 0 to 1000 mVpp ±15% ±25mVpp
FF Noise Measurement Range:	9KHz to 40KHz 0 to 1000 mVpp ±10% ±25mVpp
HF Noise Measurement Range:	90KHz to 350KHz 0 to 250 mVpp ±20% ±25mVpp
Signal Level Measurement Range:	0.12 to 2 Vpp ±10% ±0.025Vpp

\* Display updates very slowly below -10°C.

The Monitor is powered by the Fieldbus and draws approximately 9.4 mA of current from the segment (depending on bus voltage and ambient temperature).

Specifications are subject to change without notice.



## **Service**

---

### **IX. Service**

The Monitor does not contain any user serviceable parts. All adjustments and/or repairs have to be performed at the factory. If the Monitor needs to be serviced, return it to Relcom, Inc. If the Monitor is covered by the limited warranty, the repairs or replacement will be made free of charge. For service outside the warranty, please call or write to determine the charges for the service before sending the Monitor.

# Warranty

---

## X. Warranty

Relcom, Inc. warrants the Monitor to perform as described in this manual under normal use for a period of one year after delivery to the original purchaser. This warranty does not apply if the Monitor has been disassembled, modified or used for purposes other than those described in this manual.

Upon verification of any defect, Relcom, Inc. shall, at its option, repair or replace the defective unit.

In no event does Relcom, Inc. assume liability for incidental or consequential damages. This warranty is the extent of the obligation or liability assumed by Relcom, Inc., and no other warranty or guarantee is either expressed or implied.

Relcom, Inc. reserves the right to make design changes to the Monitor without notice and with no obligation to make the same or similar changes to units previously manufactured.

Relcom, Inc. has made every effort to assure the accuracy of the information contained in this manual. Relcom is not, however, responsible for any errors or omissions. Please contact us with any questions or suggestions.

Relcom, Inc.  
2221 Yew St.  
Forest Grove, OR 97116  
USA

Tel: (503) 357-5607  
Fax: (503) 357-0491  
Email: [FBT-6Help@relcominc.com](mailto:FBT-6Help@relcominc.com)  
[www.relcominc.com](http://www.relcominc.com)

# EMC Summary Information

---

## XI. EMC Summary Information

European Union EMC Tests in accordance with:

- EN61326 EMC requirements for measurement, control and laboratory equipment
- CISPR22:2005 (EN55022) INFORMATION TECHNOLOGY EQUIPMENT – RADIO DISTURBANCE CHARACTERISTICS – LIMITS AND METHODS OF MEASUREMENT
- CISPR24:2002 (EN55024) INFORMATION TECHNOLOGY EQUIPMENT – IMMUNITY CHARACTERISTICS – LIMITS AND METHODS OF MEASUREMENT

Tested Products: **FBT-6**

Other products that conform based on these tests: **FBT-6-PA**

### European Union Electromagnetic Compatibility (EMC) Tests in accordance with EC Council Directive 89/336/EEC

#### Emissions Tests per EN61326 Class A

Result	Standard	Description	Port	Comments
Pass	EN61326	Radiated Emissions	Enclosure	N/A
N/A	EN61326	Conducted Emissions	AC Power	N/A

#### Immunity Tests per EN61326 Annex A

Result	Standard	Description	Port	Criteria
Pass	EN61000-4-2	Electrostatic Discharge Immunity	Enclosure	C
Pass	EN61000-4-3	RF Electromagnetic Field Immunity	Enclosure	A
Pass	EN61000-4-4	Electrical Fast Transient/Burst Immunity	I/O signal/control	B
Pass	EN61000-4-5	Surge Immunity	I/O signal/control	B
Pass	EN61000-4-6	RF Conducted Immunity	I/O signal/control	A
N/A	EN61000-4-8	Magnetic Field Immunity	N/A	N/A
N/A	EN61000-4-11	Voltage Dips/Short Interruptions Immunity	N/A	N/A

# EMC Summary Information

---

## Emissions Tests per EN55022 Class B

Result	Standard	Description	Port	Comments
Pass	EN55022	Radiated Emissions	Enclosure	N/A
Pass	EN55022	Conducted Emissions	AC Power	N/A

## Immunity Tests per EN55024

Result	Standard	Description	Port	Criteria
Pass	EN61000-4-2	Electrostatic Discharge Immunity	Enclosure	B
Pass	EN61000-4-3	RF Electromagnetic Field Immunity	Enclosure	A
Pass	EN61000-4-4	Electrical Fast Transient/Burst Immunity	AC Mains	B
Pass	EN61000-4-5	Surge Immunity	AC Mains	B
Pass	EN61000-4-6	RF Conducted Immunity	AC Mains	A
N/A	EN61000-4-8	Magnetic Field Immunity	N/A	N/A
N/A	EN61000-4-11	Voltage Dips/Short Interruptions Immunity	N/A	N/A

I, Cyrus Kelly, representative for Relcom, Inc., verify that the product tested is representative of production products to be sold. Based on the results presented in this report the FBT-6 product family can be marked with the FCC mark (as a Class A digital device) and the CE mark.



---

(signature)

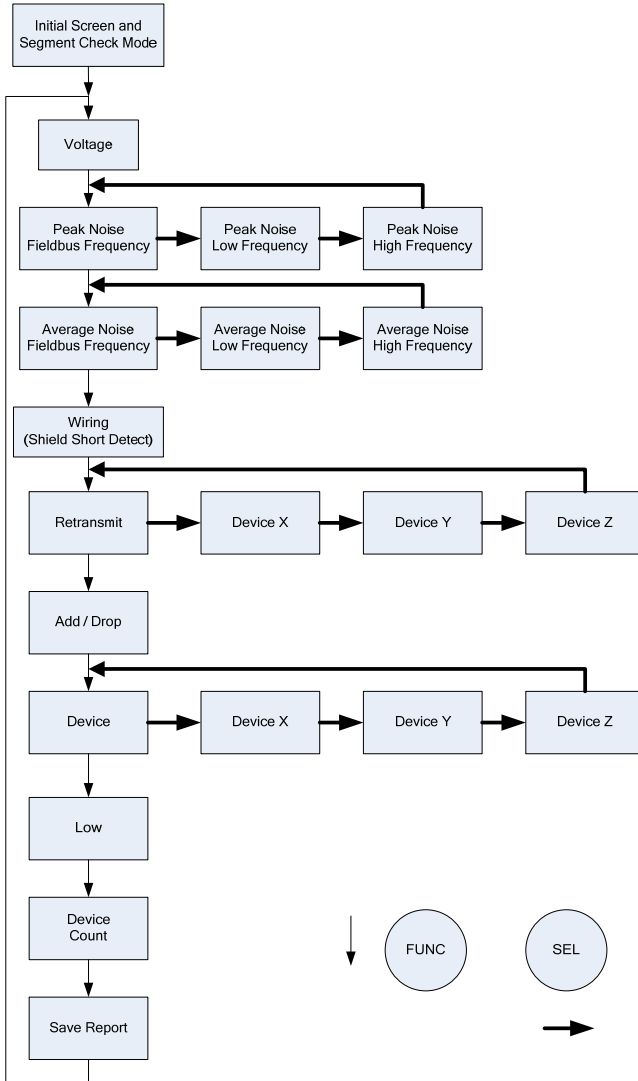
# Revision History

## XII. Revision History

Revision	Date	Description
A	11/15/2005	Original Release
B	12/22/2005	Added warning not to connect USB and FF ports at the same time
C	01/16/2006	Added certification text, changed peak and average noise descriptions to include OK/HIGH display and different trigger levels for HF and LF noise bands, corrected typos, updated FBT-6 assistant to describe release 1.2, changed output file format from comma delimited to tab delimited, added excessive noise mode description.
D	02/02/2006	Added caution about conductive case, added note about opening data file using Excel File-Open.
E	03/01/2006	Minor changes for improved readability.
F	05/09/2006	Added missing Wiring block in Figure 1 (navigating functions), added table of contents, specifications, warranty, and service sections, added front and back cover, added copyright, EMC Summary, and contact information. Moved FBT-6 Assistant installation instructions into user manual, added uninstalling FBT-6 Assistant.
G	4/17/2007	Added warning in Operation section about 10mA current draw, added resistance numbers for Shield Short function, updated noise frequency bands, changed OK/BAD limits to match FF spec. Added new features/changes associated with Release 2 (updated Save Data function, intermittent shield short detect, generation of reports in Excel, date/time stamps, erase reports in FBT-6 from Assistant software, support for FBT-5. Reset in Add/Drop, Device, and Device Count screens now affect all 3 screens. Added Accessory section. Added Set Reports and Set OK/BAD Limits functions.
H	1/7/2008	Added ATEX category 3 certifications, updated driver installation instructions.
I.0	1/7/2009	Added Vista installation instructions, added 1200mV signal level limit, added Initial Count to Device Count function, changed OK/BAD limits screen to Alert Limits, Device function now indicates BAD if device is dropped or signal level is outside limits.
J.0	4/17/2009	Added notes about Monitor not working with some USB hubs and laptop docking stations.
J.1	12/7/2009	Added note about possibility of Monitor getting stuck in Segment Check Mode.

K.0	5/27/2011	Added Windows 7 installation instructions. Updated Retransmit, Add-Drop, Device, and Device Count descriptions to indicate that resetting any one of those functions also resets the others.
L.0	4/10/2013	Removed ATEX Ex nL IIC T4 marking as "nL" is no longer supported in the EU. Added instructions for installation on Windows 8.
M.0	3/31/2017	Removed MTL logo from product photo and front cover.
N.0	8/27/2018	Update the certification information. Added Windows 10 install/uninstall instructions.

## Navigating through the Monitor's Functions



---

Relcom, Inc.  
2221 Yew St.  
Forest Grove, OR 97116  
USA

Tel: (503) 357-5607  
Fax: (503) 357-0491  
[www.relcominc.com](http://www.relcominc.com)